

Connection



R990

Your MicroGC communicates via an Ethernet link, which you connect to your computer using the cable supplied.



PGC 990

Your analyzer communicates via an Ethernet link. This link must be connected in accordance with current ATEX standards.

Carrier gas

Your MicroGC can work with **He, H₂, N₂** or **Ar** configurations.

Important: Check your computer gas configuration, as a wrong configuration would damage your instrument.

Quality = 99,9995 % purity min.
Pressure = 5.5 ± 0.2 bars (80 ± 2 PSI)

Connection between pressure reducer and MicroGC:

- Use clean, dry 1/8" stainless steel or copper tubing with Swagelok fittings
- Purge regulator/line assembly thoroughly with carrier gas
- Do not use liquid to detect leaks

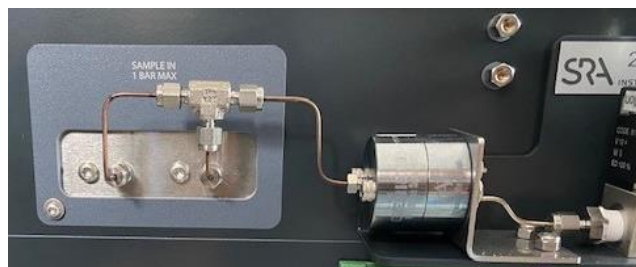


Sample

Sample pressure and quality must be checked:

Max. pressure = 1 bar (rel.)
No liquid / No solid

If necessary, add an in-line filter to protect the injector from particles



Use a membrane filter only if your sample is under positive pressure.

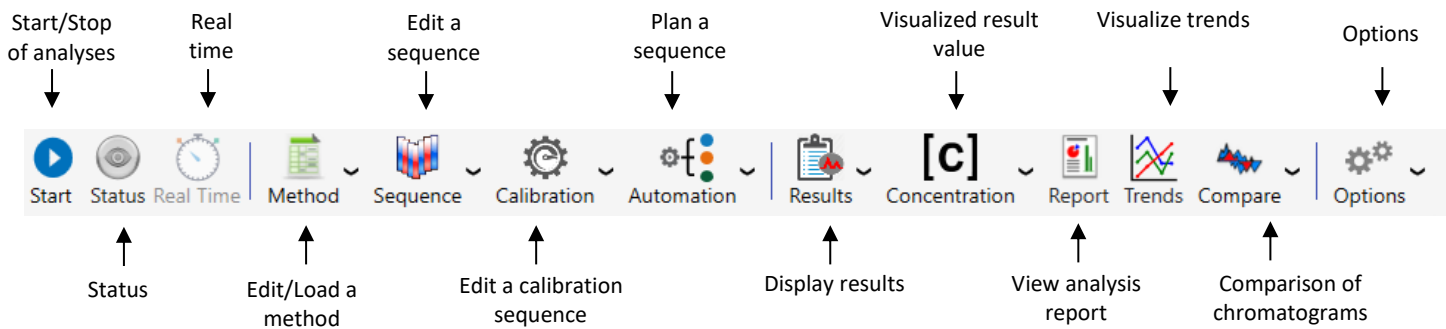
Other recommendations ...

- When you start your MicroGC: load a "purge" method with all detectors OFF to purge the columns for about 10 minutes.
- Regenerate columns at maximum temperature (160°C or 180°C) between 24 and 48 hours. Program this bake-out with Soprane CDS if required
- Load a standby method with detectors OFF when the MicroGC is not in use.

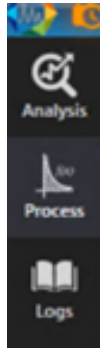


We recommend that you keep your MicroGC continuously under carrier gas.

Soprane CDS menu bar



Develop a method for processing chromatograms



1. Integration parameters
2. Peaks identification (Peak table)
3. Calibration / Quantification
4. Results
5. Report



To develop the method, proceed step by step. Complete one step before moving on to the next.

Shortcuts



Keyboard and mouse shortcuts

ZOOM (in the whole software):

Zoom out: double right-click

Keyboard: use the arrows to move the view and the **CTRL** key + the arrows to zoom in



Identification (Process module):

In the identification part, use **CTRL** + left click on the peak to add it to the compound table.

Results (Soprane CDS main screen):

Export your results to Excel by clicking on the following buttons:

