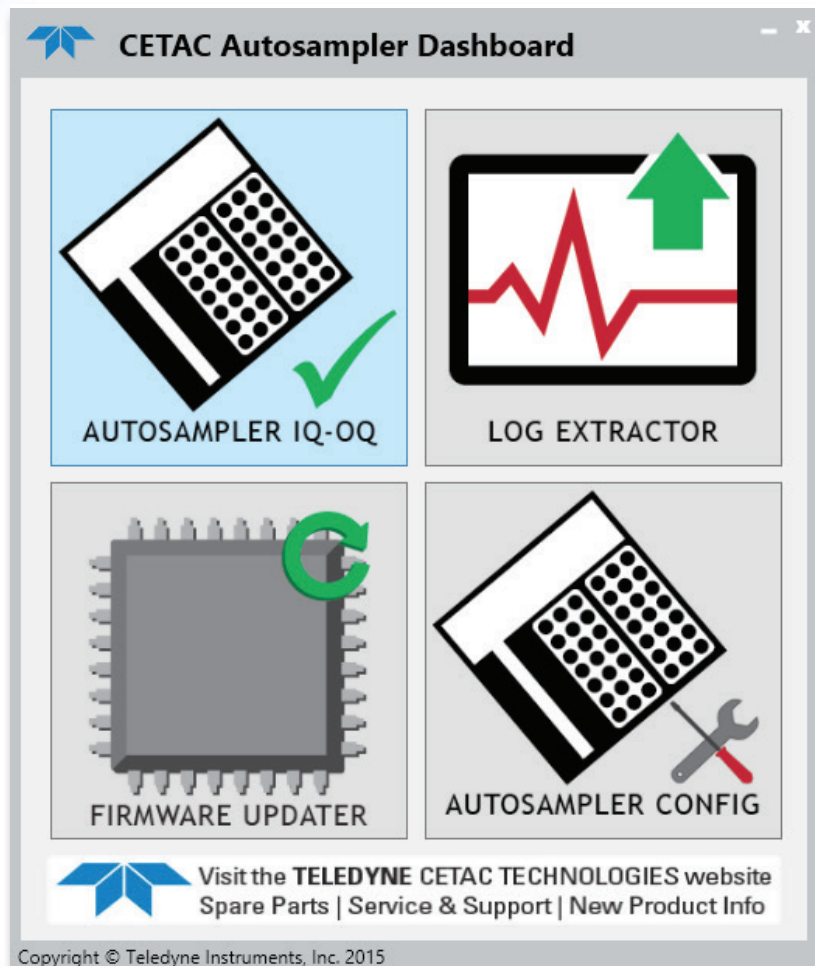


# Autosampler Dashboard

Utility Software Package – ASX-280, ASX-560, XLR-8<sub>60</sub>



## Perfecting the Standard

More features and improved performance define the next generation of autosampler from Teledyne CETAC Technologies. The ASX-560, ASX-280 and XLR-8<sub>60</sub> Autosamplers build upon the reliability of the of the ASX-520 family of instruments with latest generation electronics, improved accessory interfaces, enhanced pumping capabilities, easier serviceability and a sleek new design!

New software utilities add value to the platform with new features and improved configurability. Installation verification, error log extraction, pumping and movement configuration, easy to use firmware updates and new electronic alignment provide the ASX-560 family with more customizable and user friendly instrument control."

### Minimum Computer Requirements

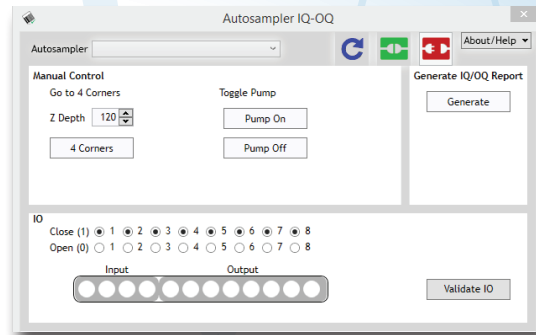
Operating System: Windows 7, 8.1 or 10  
Processor: Pentium i3 or better  
Memory: 2GB RAM  
Video Resolution: 1024 x 768



# Autosampler Dashboard

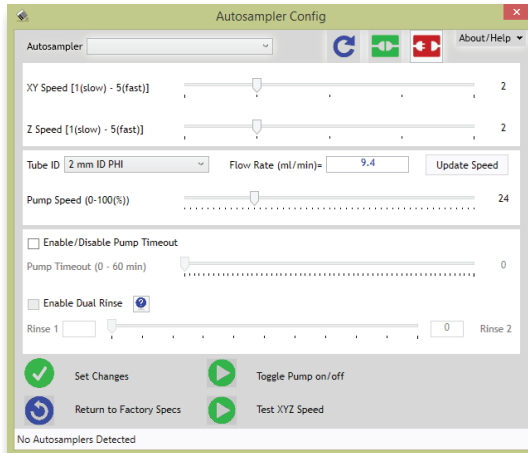
## Autosampler IQ-OQ ►

Utility for verification of installation, communication and functionality. X/Y/Z movement verification, pump verification, IO board verification, and report generation features for documentation of installation. Instruction manuals for all utilities are contained in the Help files.



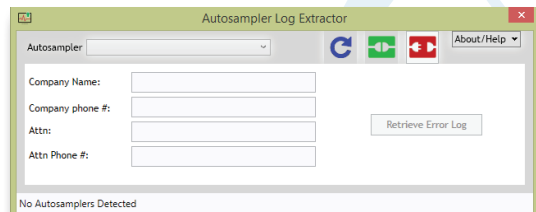
## Autosampler Config

Utility for setting configuration parameters on the autosampler: X, Y & Z movement speeds (1 -5), Pump speed and tubing configuration (0.8 – 80 mL/min flow rate), pump timeout, and dual rinse behavior.



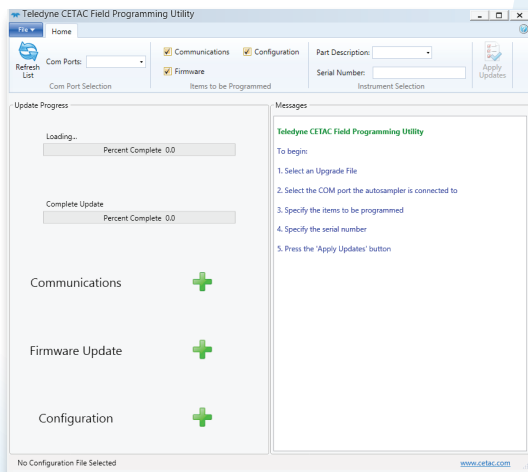
## Autosampler Log Extractor ►

Utility for retrieving commands from the autosampler for improved field Service diagnosis.



## Field Programming

Utility for updating firmware. Improved system for updating firmware with easy to use software. This replaces the more complicated method required on the ASX-520. Personalities no longer need to be set, and no mechanical alterations are required. The user selects the appropriate file, and the software takes care of the rest.



## Alignment Utility ►

Utility for setting the alignment of the autosampler. Replaces the mechanical alignment requirement of the ASX-520. This software package allows the user to set the electronic offset to the home position and alignment zones for the sample and standards positions. This produces improved accuracy and reliability.

